

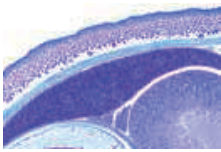
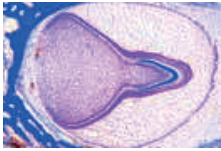
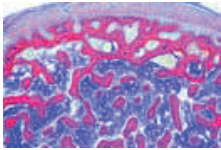
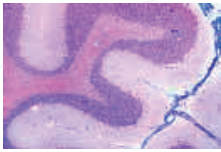
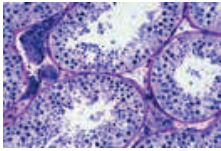
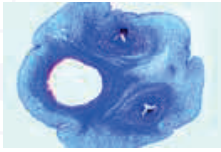
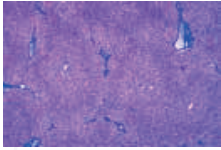
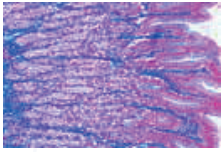
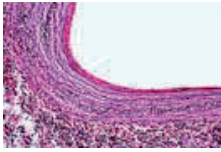
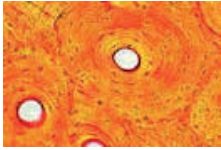
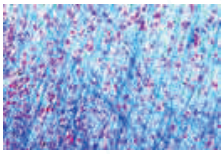
MS6-MaxiHisto100

Human Histology Prepared Microscope Slide Set

This Histology microscope slide set comprises of hundred pieces prepared microscope slides which show a wide range of cells, tissues and organs throughout the human body presented in a slide box with lid.

Maxilab Biotechnology offer excellent teaching slides of Histology of Human Tissues pertaining to all organs. These slides are extremely useful for teaching of dental, medical, biology, pharmacy and paramedical students as histology forms the basis of understanding normal structure of body and of the pathological process.





Code	Specification	MS6-MaxiHisto100 Human Histology Prepared Microscope Slide Set
HH01	Human	Simple squamous Epithelium sec.
HH02	Human	Simple Cuboidal Epithelium sec.
HH03	Human	Simple Columna Epithelium sec
HH04	Human	Columna Pseudo stritified cillated epithelium
HH05	Human	Stratified squamous Epithelium sec
HH06	Human	Transitinl Epethelium sec
HH07	Human	Ciliated Epithelium
HH08	Human	Epidermis from human mouth
HH09	Human	Glandular Epithelium sec
HH10	Human	Loose Connective Tissue w.m
HH11	Human	Dense Connective Tissue w.m
HH12	Human	Adipose Tissues sec.
HH13	Human	Hyaline Cartilage sec.
HH14	Human	Elastic Cartilage sec.
HH15	Human	Fibro Cartilage sec.
HH16	Human	Human Chromosome Nonmal Female w.m
HH17	Human	Human Chromosome Nonmal Male w.m
HH18	Human	Medulla oblongata sec
HH19	Human	Red marrow smear
HH20	Human	Smooth Muscle Teased Preparation w.m
HH21	Human	Blood smear
HH22	Human	Hair whole mount
HH23	Human	Smooth Muscle l.s and c.s
HH24	Human	Skeletal Muscle l.s and c.s
HH25	Human	Cardiac Muscle sec
HH26	Human	Spinal Card l.s and c.s
HH27	Human	Sciatic nerve l.s.
HH28	Human	Motor neuron w.m
HH29	Human	Motor Nerve Endings w.m
HH30	Human	Tongue l.s. show filiform papilla
HH31	Human	Esophagus sec.
HH32	Human	Trachea sec.
HH33	Human	Stomach sec.
HH34	Human	Stomach fundic portion sec.
HH35	Human	Stomach Cardiac Region sec.
HH36	Human	Stomach Pyloric Region sec.
HH37	Human	Small Intestine c.s
HH38	Human	Duodenum sec.
HH39	Human	Jejunum sec.
HH40	Human	Ileum c.s. show villi and goblet cells
HH41	Human	Appendix sec.
HH42	Human	Large Intestine sec.
HH43	Human	Colon sec.
HH44	Human	Rectum sec.
HH45	Human	Pancreas sec.
HH46	Human	Spleen sec
HH47	Human	Liver sec
HH48	Human	Gall Bladder sec
HH49	Human	Fat layer
HH50	Human	Fibroblast

Code	Specification	MS6-MaxiHisto100 Human Histology Prepared Microscope Slide Set
HH51	Human	Nerve cells
HH52	Human	Brochiolus
HH53	Human	Lung sec
HH54	Human	Artery sec
HH55	Human	Vein sec
HH56	Human	Large artery sec
HH57	Human	Large vein sec
HH58	Human	Heart l.s.whole
HH59	Human	Kidney l.s
HH60	Human	Kidney with Blood Vessel Injected sec.
HH61	Human	Ureter sec.
HH62	Human	Ovary sec.
HH63	Human	Placenta Human sec.
HH64	Human	Human Sperms smear
HH65	Human	Epididymis sec
HH66	Human	Prostate Gland Human sec.
HH67	Human	Fallopian Tube sec
HH68	Human	Penis c.s
HH69	Human	Cervix sec
HH70	Human	Thyroid Gland sec
HH71	Human	Thymus Gland sec
HH72	Human	Mammary gland sec
HH73	Human	Adrenal Gland sec
HH74	Human	Lymph Node sec
HH75	Human	Salivary gland c.s.
HH76	Human	Cerebrum sec
HH77	Human	Cerebellum sec
HH78	Human	Pituitary gland c.s.
HH79	Human	Tendon teased c.s.
HH80	Human	eye entail sec
HH81	Human	Eyeball sec
HH82	Human	Human Skin sec show Thick Cornifie Layer
HH83	Human	Human Skin Sec Through sweat Gland
HH84	Human	Human Skin Sec Through Hair Folicle
HH85	Human	White fibrous tissue
HH86	Human	Mucous tissue ,umbilical cord
HH87	Human	Decalcified bone c.s.
HH88	Human	Infant developing bone section
HH89	Human	Developing membrane bone
HH90	Human	muscle-tendon junction l.s.
HH91	Human	muscle spindle
HH92	Human	Nerve bundle
HH93	Human	sympathetic ganglion
HH94	Human	motor cortex section
HH95	Human	sentor cortex
HH96	Human	cerebellar cortex
HH97	Human	Palatine tonsil
HH98	Human	thin skin from human palm section
HH99	Human	finger nail section
HH100	Human	stomach -duodenal junction l.s.

